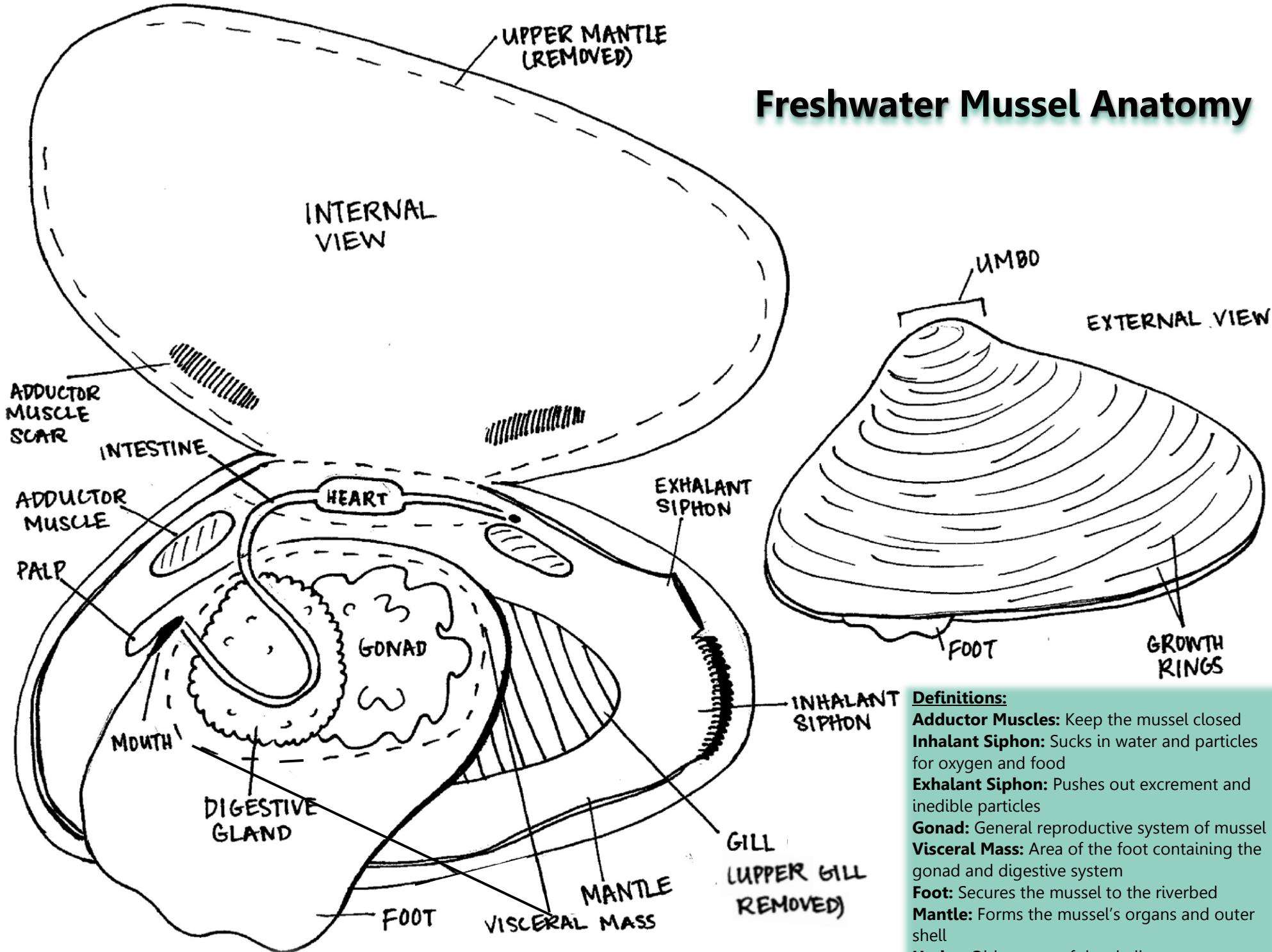


# Freshwater Mussel Anatomy



**Definitions:**  
**Adductor Muscles:** Keep the mussel closed  
**Inhalant Siphon:** Sucks in water and particles for oxygen and food  
**Exhalant Siphon:** Pushes out excrement and inedible particles  
**Gonad:** General reproductive system of mussel  
**Visceral Mass:** Area of the foot containing the gonad and digestive system  
**Foot:** Secures the mussel to the riverbed  
**Mantle:** Forms the mussel's organs and outer shell  
**Umbo:** Oldest part of the shell