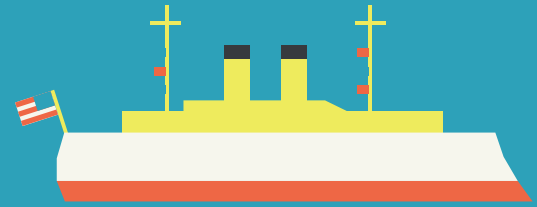


Cruiser *Olympia*




BINGO

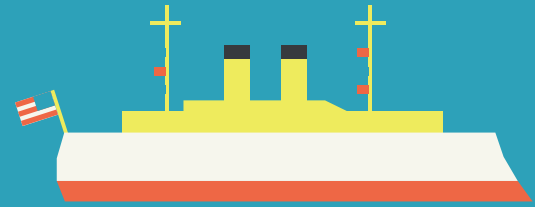
1. Independence Seaport Museum is celebrating Cruiser *Olympia*'s commissioning anniversary in 2020. How many years has it been since she's been commissioned?
Answer: 125
2. Cruiser *Olympia* is one of two American ships left from World War I. What's the other one?
Answer: Battleship Texas
3. Under how many presidential administrations did *Olympia* serve under?
Answer: 6
4. What year was she commissioned in?
Answer: 1895
5. When was Cruiser *Olympia* designated a National Historic Landmark?
Answer: January 29, 1964
6. What was the place onboard called where sailors would recover from illnesses or shipboard injuries?
Answer: Sick Bay
7. True or False: Cruiser *Olympia* is the oldest steel warship afloat in the world.
Answer: True
8. One of the vessel's flag officers also became the first and only Admiral of the Navy. Who was it?
Answer: George Dewey
9. What was Cruiser *Olympia*'s last act of service in 1921 before being decommissioned?
Answer: Bringing home the Unknown Solider of World War I
10. What did the almost 400 enlisted men aboard *Olympia* sleep in?
Answer: Hammocks
11. True or False: Before there was an operating room onboard they use to take place in the galley.
Answer: False
12. Cruiser *Olympia* is not the last "protected cruiser" type of warship. Which cruiser holds that distinction?
Answer: Aurora
13. How many significant refits (reconfigurations) did *Olympia* go through during her service? P.S. Today, most of her equipment and spaces date to 1920.
Answer: 12
14. How much coal could be stored in *Olympia*'s 38 coal bunkers?
Answer: 1,100 tons
15. What groundbreaking ceremony did she partake in on January 6, 1922. *Olympia*'s guns fired a salute to mark the beginning of construction.
Answer: Delaware River Bridge
**Now known as the Ben Franklin Bridge*
16. Cruiser *Olympia* was once used as a floating classroom for the United States Naval Academy in Annapolis. What department was it the classroom for?
Answer: Steam Engineering
17. What popular phrase, said during the Battle of Manila Bay, was used extensively in pop culture?
Answer: You May Fire When Ready
18. Who designed Cruiser *Olympia*'s general characteristics and engines while also being thought as by some to be the father of U.S. naval engineering?
Answer: George Melville
19. What year did the U.S. Navy bring aboard wireless telegraphy (radio) to use onboard?
Answer: 1903
20. What type of material was used to make all decks on Cruiser *Olympia*?
Answer: North Western Douglas Fir
21. Where was Cruiser *Olympia* built?
Answer: San Francisco, California
22. Cruiser *Olympia* was built to be a Flagship. A Flagship was also known as what?
Answer: A Floating Embassy
23. One can be thrown in the brig for a variety of reasons, ranging from missing your wake-up call, to physical assault on another sailor. How many brigs does *Olympia* have onboard?
Answer: 2
24. How many men made up the max complement of *Olympia*'s crew?
Answer: 450



Cruiser Olympia


BINGO

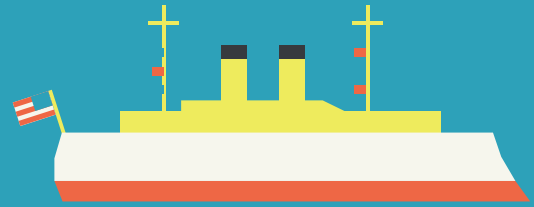
Six (6)	False	You May Fire When Ready	San Francisco, California	Battleship Texas
George Dewey	North Western Douglas Fir	Aurora	Hammocks	Steam Engineering
Four Hundred and Fifty (450)	1895	 Free Space	One Hundred Twenty Five (125)	Sick Bay
1903	Bringing Home the Unknown Soldier of World War I	Floating Embassy	January 29, 1964	Twelve (12)
Delaware River Bridge	Two (2)	True	George Melville	One Thousand, One Hundred (1,100) Tons



Cruiser Olympia


BINGO

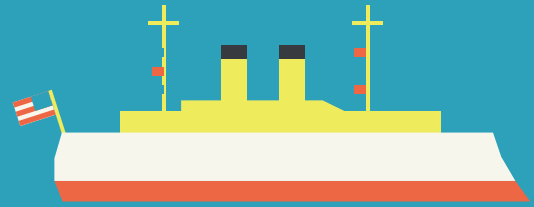
Battleship Texas	Aurora	San Francisco, California	You May Fire When Ready	Six (6)
Steam Engineering	Hammocks	False	North Western Douglas Fir	George Dewey
Sick Bay	January 29, 1964	 Free Space	Bringing Home the Unknown Soldier of World War I	Four Hundred and Fifty (450)
1903	George Melville	1895	True	Twelve (12)
One Thousand, One Hundred (1,100) Tons	One Hundred Twenty Five (125)	Two (2)	Floating Embassy	Delaware River Bridge



Cruiser Olympia


BINGO

San Francisco, California	Floating Embassy	Steam Engineering	Six (6)	False
Hammocks	You May Fire When Ready	1903	George Dewey	North Western Douglas Fir
One Hundred Twenty Five (125)	Sick Bay	 Free Space	Four Hundred and Fifty (450)	1895
January 29, 1964	Twelve (12)	Battleship Texas	Aurora	Bringing Home the Unknown Soldier of World War I
George Melville	One Thousand, One Hundred (1,100) Tons	Delaware River Bridge	True	Two (2)



Cruiser Olympia

BINGO

False	Six (6)	Delaware River Bridge	Battleship Texas	San Francisco, California
North Western Douglas Fir	George Dewey	One Thousand, One Hundred (1,100) Tons	True	Hammocks
Steam Engineering	Four Hundred and Fifty (450)	 Free Space	Sick Bay	One Hundred Twenty Five (125)
Bringing Home the Unknown Soldier of World War I	1903	January 29, 1964	Twelve (12)	Floating Embassy
Two (2)	You May Fire When Ready	1895	Aurora	George Melville