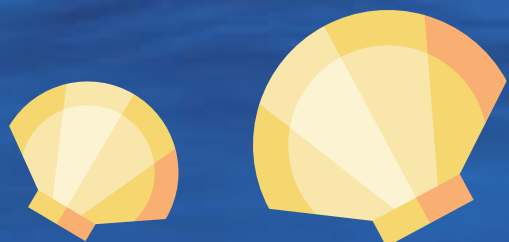
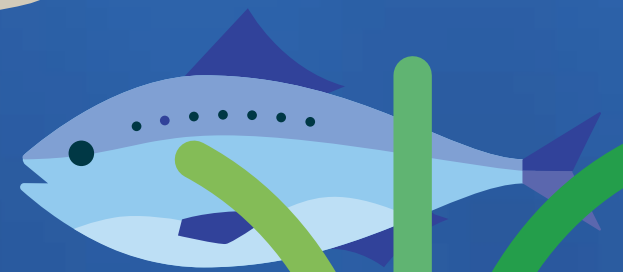
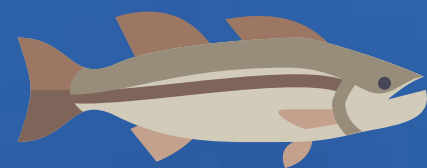
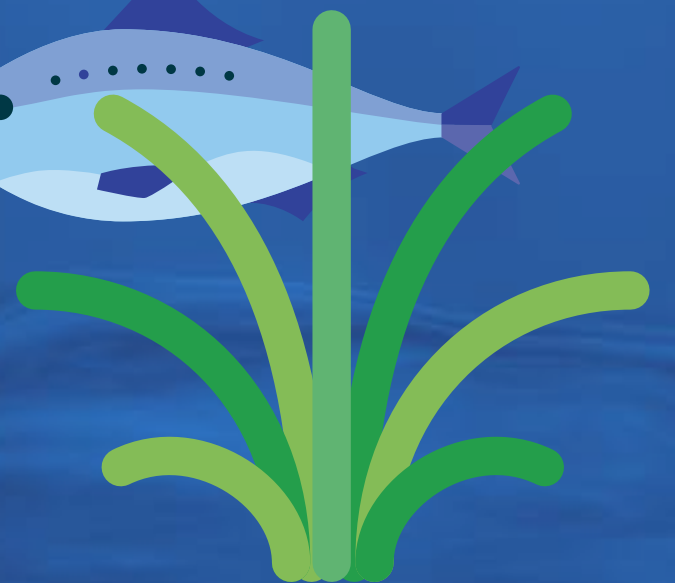


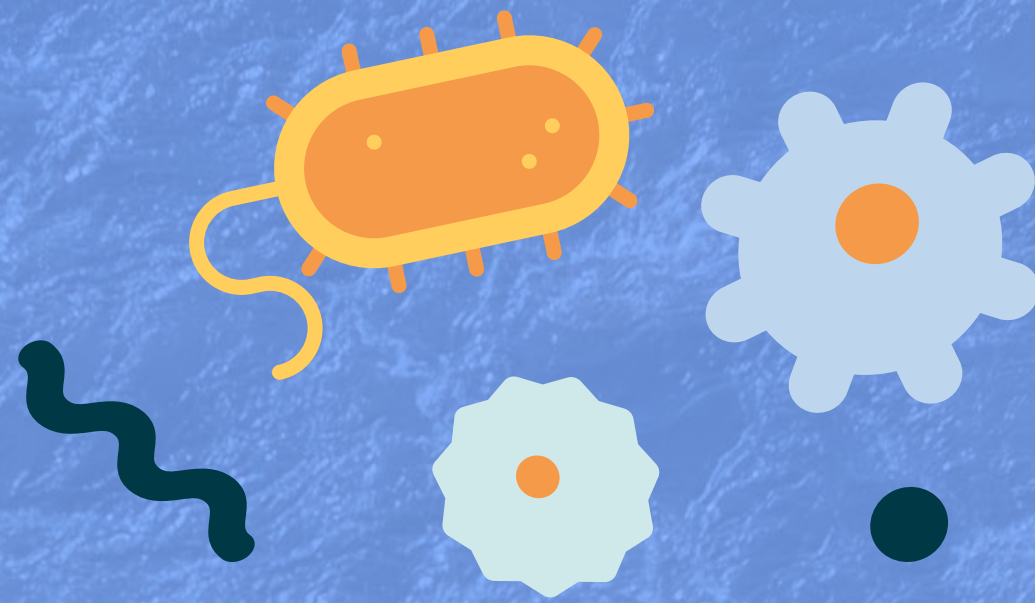
Classy Plankton

How to classify plankton!

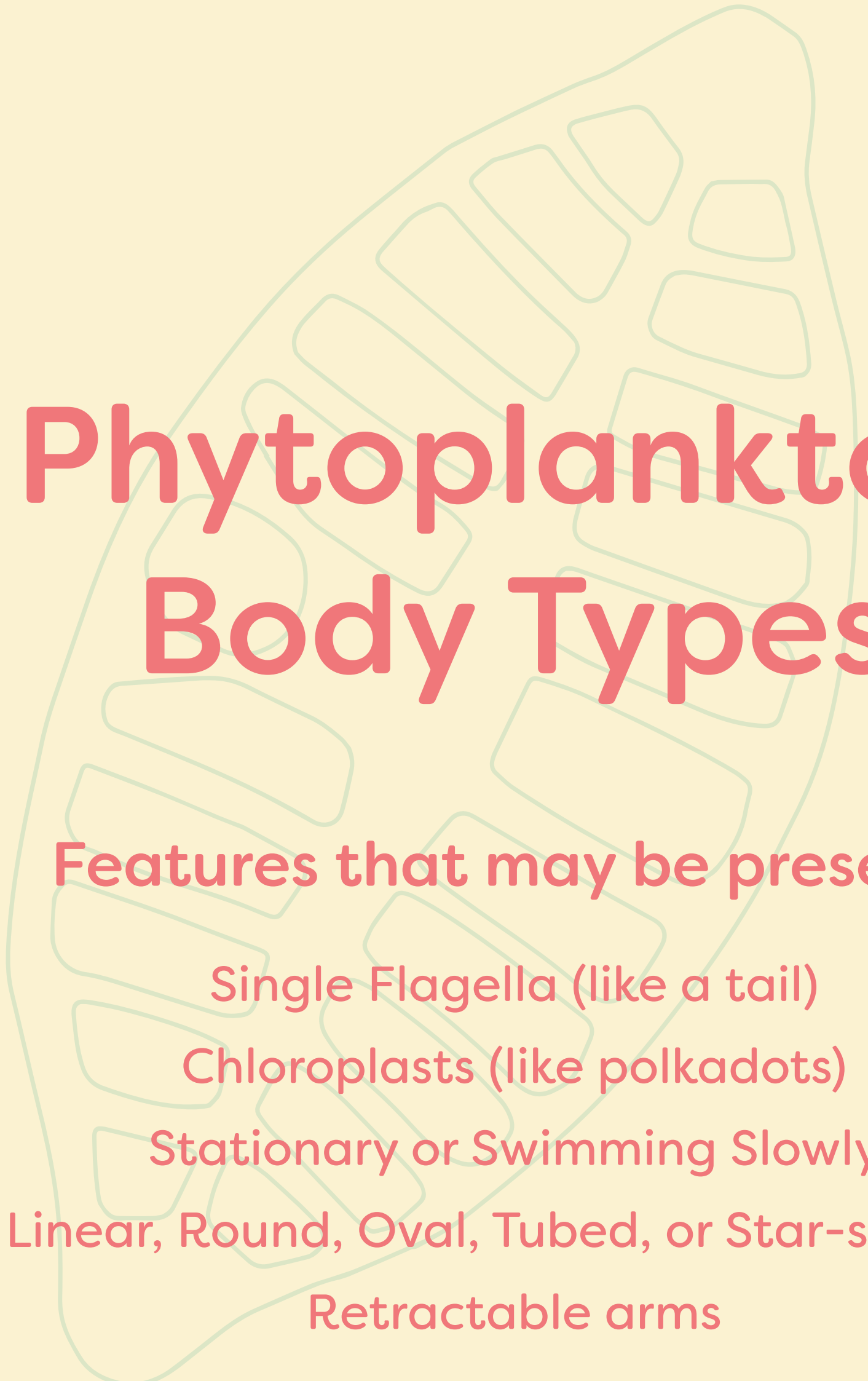


Independence
Seaport Museum





Phytoplankton are microscopic plants and primary producers. They provide up to 70% of oxygen on Earth! Zooplankton are animals ranging from different sizes, microscopic to as large as jellyfish, and primary consumers. They are first in line for other aquatic animals to eat! Together, they are the front runners of providing a healthy ecosystem to our waterways!



Phytoplankton Body Types

Features that may be present:

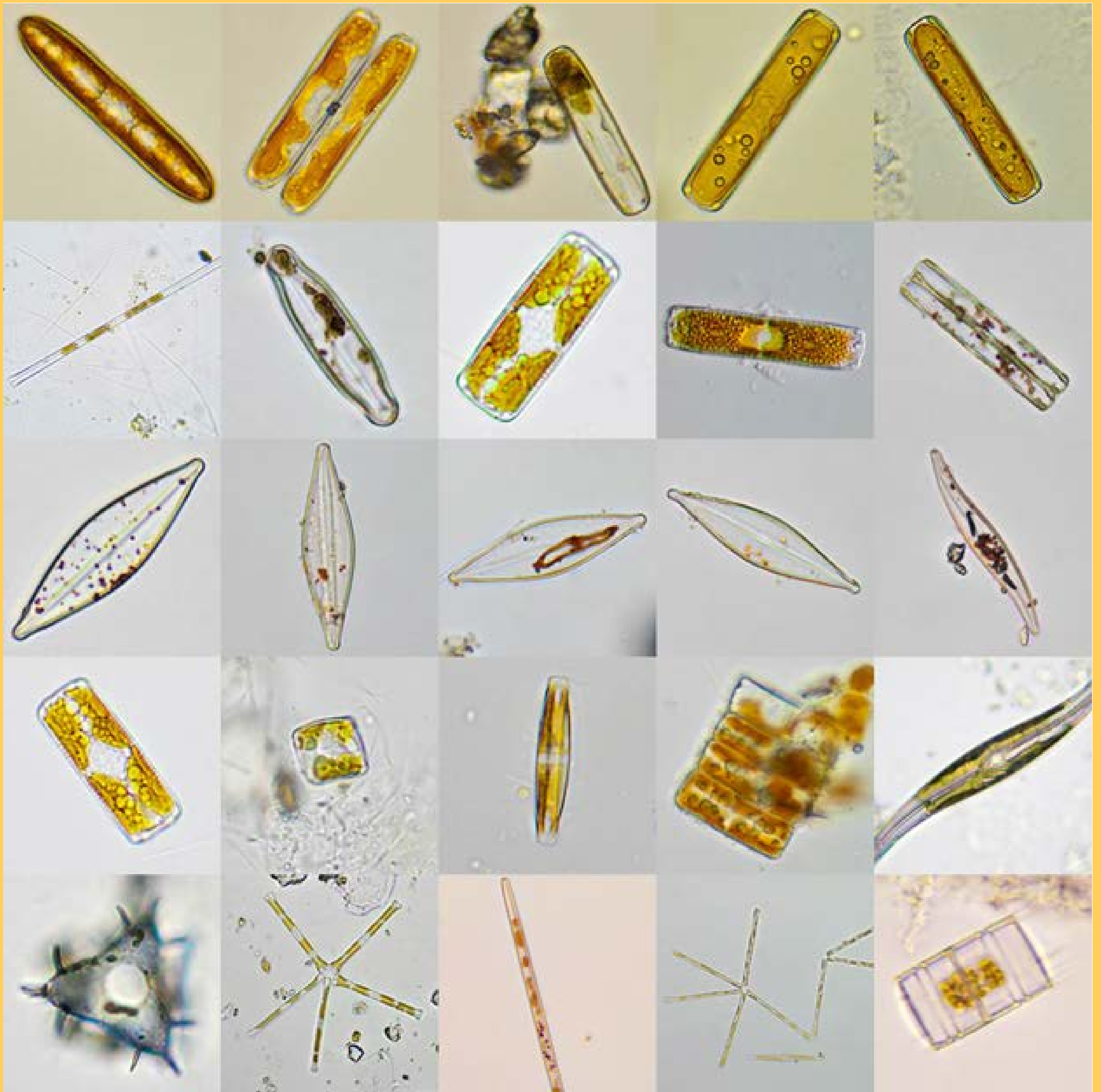
Single Flagella (like a tail)


Chloroplasts (like polkadots)

Stationary or Swimming Slowly

Linear, Round, Oval, Tubed, or Star-shaped

Retractable arms





Zooplankton Body Types

Features that may be present:

Antennae

Cilia (like hairs) or Flagella (like a tail)

Exoskeleton Shell

Eyespot

Stationary or Fast-swimming

Eggs

Internal Organs Visible



